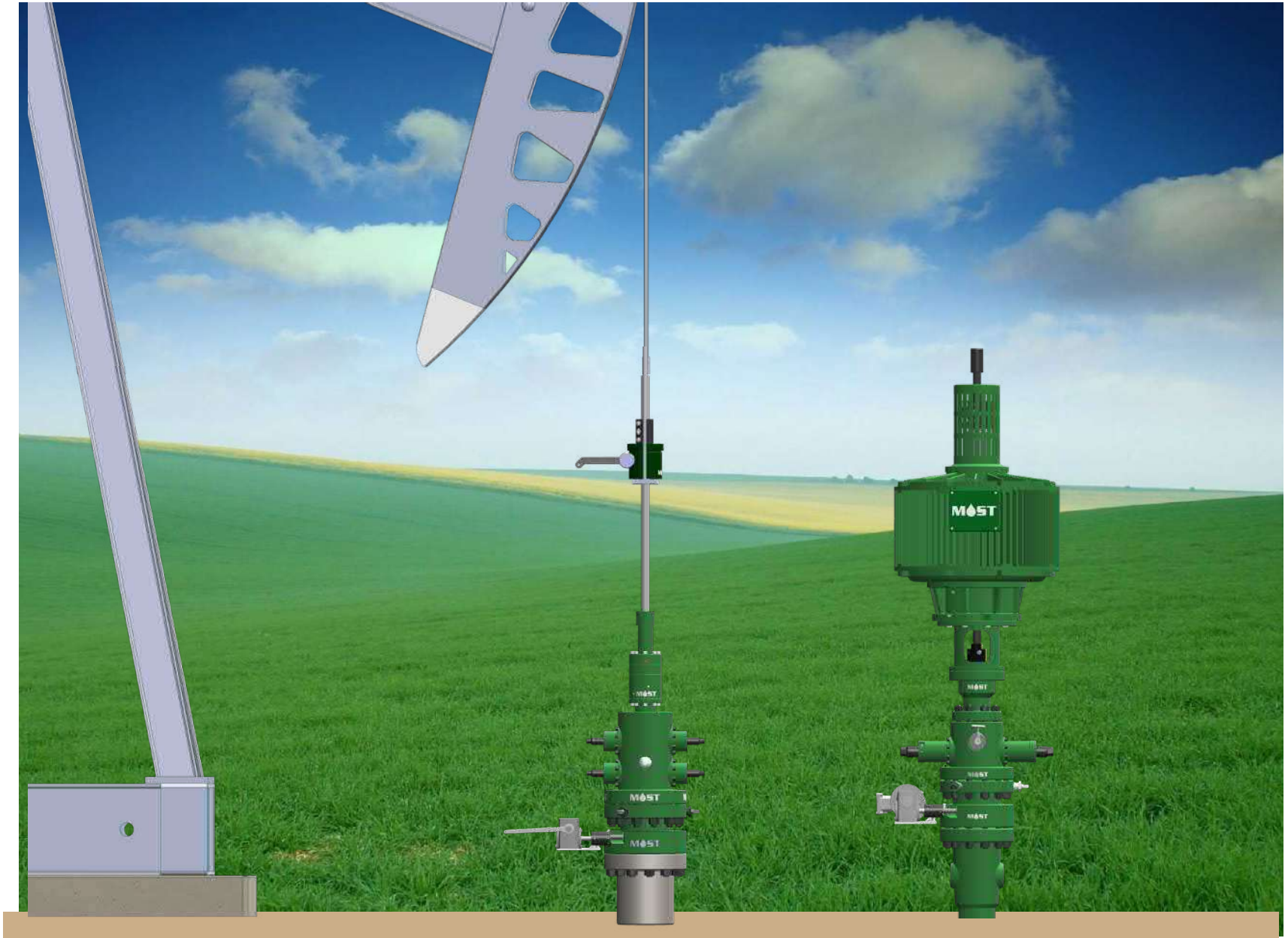




Product Catalog



World Leader in Artificial Lift Systems



Table of Contents

Company Profile	1
Stuffing Boxes	2
Low Pressure Stuffing Boxes	2
Pollution Control Stuffing Boxes	3
High Temp Stuffing Box	4
Pivot Stroker Stuffing Box	4
High Pressure Stuffing Box	4
Stuffing Box Accessories	6
Packing	9
Blow Out Preventors (BOPs) and Flow Tees	10
Flow Tees	10
Basic BOPs	10
Single Ram BOPs	12
Dual Ram BOPs	13
10,000 psi BOP	14
High Temp BOP	14
BOP Accessories	15
Tubing Rotators	16
Tubing Rotator Accessories	17
Spools and Flanges	18
Rod Rotators	19
Rod Clamps	19
Multi-Fit Casing Bowl	20
TorqKing™ Collar	21



Company Profile

Millennium Oilflow Systems & Technology Inc. (MOST™) strives to deliver practical and innovative solutions for production of oil by the artificial lift system.

Our products are designed to increase productivity by extending tubing (well) life resulting in reduced work-over and operating costs while increasing safety in the field.

Guided by our core values and inspired by world-class employees, our goal is to become a recognized leader and trusted business partner to our clients.

With our in-house engineering and manufacturing capabilities, we are committed to continuous improvement and enhancement of our products based on our clients' changing needs.

Products manufactured at MOST™ are designed, manufactured and tested to strict standards of ISO 9001-2008, API and UL.

Through our manufacturing facilities in Canada and USA and sales teams in key locations, our clients receive best-in-class products, delivery and after-sales service.

Classic Single

- Dependable performance
- Utilizes cone packing
- Rated up to 1500 psi
- Standard model has the lubricating upper gland
- Options available for lubrication reservoir glands and leak protection
- Available in standard threaded connections
- Available to fit standard rod sizes
- Flanged bottom connection available



Classic Double

- Most widely used and recognized stuffing box in the industry
- Dependable performance
- Utilizes cone packing
- Rated up to 1500 psi
- Upper packing can be changed under pressure by engaging lower packing
- Standard model has the lubricating upper gland
- Options available for lubrication reservoir glands and leak detection
- Available in standard threaded connections
- Available to fit standard rod sizes
- Flanged bottom connection available



HPI Single

- Low profile for short stroke systems
- Utilizes inverted cone packing
- Rated up to 3000 psi
- Optional NACE compliant
- Options available for leak detection
- Available in standard threaded connections
- Available to fit standard rod sizes
- Flanged bottom connection available



HPI Double

- Inverted cone packing
- Pressure rated up to 3000 psi
- Optional NACE compliant
- Upper packing can be changed under pressure by engaging lower packing
- Available in standard threaded connections
- Available to fit standard rod sizes
- Flanged bottom connection available



Pollution Control Stuffing Boxes

- Fully optioned HPI or Classic series stuffing boxes with leak detection and flapper valve
- Available in standard threaded connections
- Available to fix standard rod sizes
- Flanged bottom connection available

**Available in
Classic Series
and HPI Series**

**Classic
Series**



**HPI
Series**



High Temp DPSB

- NACE compliant
- Designed for high temperature and high pressure wells
- Pressure rated up to 3000 psi
- Upper packing can be changed under pressure by engaging lower packing
- Available in standard threaded connections
- Available to fit standard rod sizes
- Flanged bottom connection available

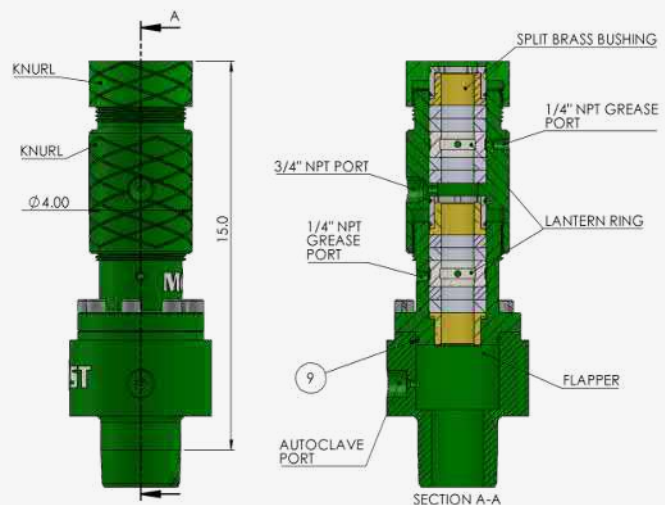


Pivot Stroker Stuffing Box

- Up to 1.5 degrees of misalignment
- Up to 5000 psi static
- Available with or without flapper
- Available in all common pin and flange sizes
- Rod sizes: 1-1/4" or 1-1/2" rod
- High Temp option for temperatures up to 300°C



High Pressure Stuffing Box



High Pressure Stuffing Box

- Modular design: single pack, double pack, triple pack, and quad pack
- 3000 psi or 5000 psi static rated
- NACE compliant
- With or without flapper or float ball
- Available as pin base or API 6A flange
- Designed to minimize height
- Available in all common pin and flange sizes
- Available for 1-1/4" or 1-1/2" rod



Double pack
without flapper

Low profile single
pack without
flapper



Double pack with
ball style flapper



Optional leak
detection top
for additional
control options



Double pack with
flapper in flange



Oil Reservoir Gland

- Additional capacity compared to the Classic Lubricating Gland
- Holds approximately 1 quart
- Extends packing life
- Available for Classic Single Pack and Classic Double Pack
- Includes 3/4" port for leak detection
- Suitable for all polished rod sizes



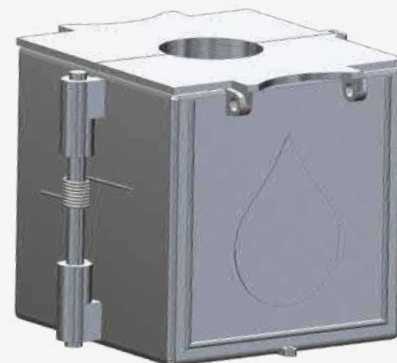
Classic Lubricating Gland

- Comes standard on Classic Single Pack and Classic Double Pack stuffing boxes
- Zerk fitting for greasing
- Extends packing life
- Suitable for all polished rod sizes



Rod Lubricator

- External lubricator for pump jack systems
- Extends packing life
- Works with any style of stuffing box
- Available for all published rod sizes



Anti-Pollution Sensor for Leak Detection

- Float style leak detector
- 3/4" NPT connection
- Optional plastic, glass, or stainless vessel
- Available standard or explosion proof
- RoHS Compliant

Prevents spills due to stuffing box leakage. Capture the leak and shut down the system before it becomes a spill.



Anti-Pollution Sensor for Leak Detection

- Weight style leak detector
- 3/4" NPT connection
- Stainless vessel
- Available standard or explosion proof



Leak Detection for HPI Style Stuffing Boxes

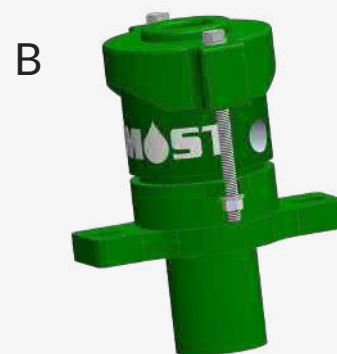
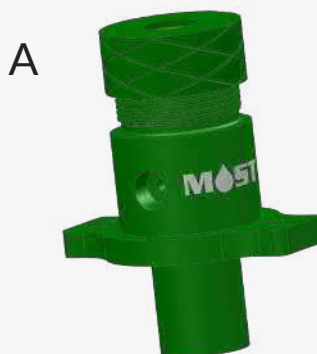
- Designed for pressures up to 3000 psi
- Adds leak detector option to HPI style stuffing boxes
- Uses V or Chevron type packing
- Available for common rod sizes



Leak Detection for Classic Style Stuffing Boxes

A) Hub Style

- Adds additional packing
- Replaces top gland

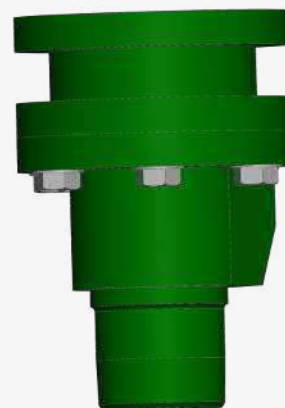


B) Ring Style

- Low cost alternative
- Installs into top gland

Flapper Assembly for Classic

- Flapper closes if polished rod breaks
- Replaces bottom section of Classic Single or Classic Double Pack stuffing boxes



Add-on Flapper, Pin by Box

- Add a flapper for spill mitigation to any pin style stuffing box
- Available in common sizes



Cone Packing

- Soft Rubber
- Hard Rubber
- Special Lube
- Teflon Filled
- Urethane
- Kevlar Brass



Steam Seal

- High temperature up to 300°C
- H₂S to 15%
- CO₂ to 20%
- High abrasion resistance



Chevron Packing

- Premium sealing
- Needs to be only finger tight
- Operating pressure expands the lip until the packing is worn out



Sour Seal

- H₂S up to 30%
- CO₂ up to 8%



Fluid Seal Rod Packing

- Premium sealing
- Needs to be only finger tight
- Operating pressure expands the lip until the packing is worn out



Rope Packing

- Traditional rope packing
- Affordable high temperature (up to 350°C)
- Many material options available



Traditional Flow Tees

- Available in common sizes
- 3 way and 4 way options
- 3000 psi working pressure



Hybrid Flow Tees with Flange

- Available in common sizes
- Pin by flange, box by flange, flange by flange
- Up to 5000 psi working pressure



Basic BOP

1500 psi rated with box top and pin bottom

TOP	API 5B Internal Thread (BOX) 2-3/8" EUE, 2-7/8" EUE, 3-1/2" EUE, other
BOTTOM	API 5B Internal Thread (PIN) 2-3/8" EUE, 2-7/8" EUE, 3-1/2" EUE, other
SIDES	Not Applicable
RAMS	Sealing blind, 1-1/8", 1-1/4", 1-1/2"



Basic BOP

2000 psi rated with box top and pin bottom

TOP	API 5B Internal Thread (BOX) 2-3/8" EUE, 2-7/8" EUE, 3-1/2" EUE, other
BOTTOM	API 5B Internal Thread (PIN) 2-3/8" EUE, 2-7/8" EUE, 3-1/2" EUE, other
SIDES	Not Applicable
RAMS	Sealing blind, 1-1/8", 1-1/4", 1-1/2"



Basic BOP

3000 psi or 5000 psi rated with box top and pin bottom

TOP	API 5B Internal Thread (BOX) 2-3/8" EUE, 2-7/8" EUE, 3-1/2" EUE, other
BOTTOM	API 5B Internal Thread (PIN) 2-3/8" EUE, 2-7/8" EUE, 3-1/2" EUE, other
SIDES	Optional
RAMS	Sealing and clamping/sealing blind, 1-1/8", 1-1/4", 1-1/2"



Basic BOP

with flange top and pin bottom

TOP	API 6B flange, 2000 psi, 3000 psi OPTION: internal thread
BOTTOM	API 5B Internal Thread (PIN or BOX) 2-3/8" EUE, 2-7/8" EUE, 3-1/2" EUE, other
SIDES	Optional
RAMS	Sealing and clamping/sealing blind, 1-1/8", 1-1/4", 1-1/2"



All MOST™ well head equipment can be customized to suit specific well requirements.

Traditional single ram BOP

with flange top and flange bottom

TOP	API 6B flange, 2000 psi, 3000 psi, 5000 psi OPTION: internal thread
BOTTOM	API 6B flange, 2000 psi, 3000 psi, 5000 psi OPTIONS: internal thread, seal prep, rotating base
SIDES	Internal thread and/or studded sides (2000 psi, 3000 psi, 5000 psi)
RAMS	Sealing and clamping/sealing blind, 1-1/8", 1-1/4", 1-1/2"



Traditional single ram BOP

with flange top and stud bottom

TOP	API 6B flange, 2000 psi, 3000 psi, 5000 psi OPTION: internal thread
BOTTOM	API 6B studded, 2000 psi, 3000 psi, 5000 psi OPTIONS: internal thread, seal prep, rotating base
SIDES	Internal thread and/or studded sides (2000 psi, 3000 psi, 5000 psi)
RAMS	Sealing and clamping/sealing blind, 1-1/8", 1-1/4", 1-1/2"



Traditional single ram BOP

with studded top and bottom

TOP	API 6B studded, 2000 psi, 3000 psi, 5000 psi OPTION: internal thread
BOTTOM	API 6B studded, 2000 psi, 3000 psi, 5000 psi OPTIONS: internal thread, seal prep, rotating base
SIDES	Internal thread and/or studded sides (2000 psi, 3000 psi, 5000 psi)
RAMS	Sealing and clamping/sealing blind, 1-1/8", 1-1/4", 1-1/2"



All MOST™ well head equipment can be customized to suit specific well requirements.

Dual ram BOP

with stud top flange bottom

TOP	API 6B studded, 2000 psi, 3000 psi, 5000 psi OPTION: internal thread
BOTTOM	API 6B flange, 2000 psi, 3000 psi, 5000 psi OPTION: internal thread, seal prep
SIDES	Internal thread and/or studded sides (2000 psi, 3000 psi, 5000 psi)
RAMS	Sealing and clamping/sealing blind, 1-1/8", 1-1/4", 1-1/2"



Dual ram BOP

with flanged top and bottom

TOP	API 6B flange, 2000 psi, 3000 psi, 5000 psi OPTION: internal thread
BOTTOM	API 6B flange, 2000 psi, 3000 psi, 5000 psi OPTION: internal thread, seal prep
SIDES	Internal thread and/or studded sides (2000 psi, 3000 psi, 5000 psi)
RAMS	Sealing and clamping/sealing blind, 1-1/8", 1-1/4", 1-1/2"



Dual ram BOP

with studded top and bottom

TOP	API 6B flange, 2000 psi, 3000 psi, 5000 psi OPTION: internal thread
BOTTOM	API 6B flange, 2000 psi, 3000 psi, 5000 psi OPTION: internal thread, seal prep
SIDES	Internal thread and/or studded sides (2000 psi, 3000 psi, 5000 psi)
RAMS	Sealing and clamping/sealing blind, 1-1/8", 1-1/4", 1-1/2"



All MOST™ well head equipment can be customized to suit specific well requirements.

Dual ram BOP

with studded sides on top

TOP	API 6B flange, 2000 psi, 3000 psi, 5000 psi OPTION: internal thread
BOTTOM	API 6B flange, 2000 psi, 3000 psi, 5000 psi OPTION: internal thread, seal prep
SIDES	Internal thread and/or studded sides (2000 psi, 3000 psi, 5000 psi)
RAMS	Sealing and clamping/sealing blind 1-1/8", 1-1/4", 1-1/2"



10,000 psi BOP

TOP	API 6BX studded or flanged
BOTTOM	OPTIONS: seal prep, API 6BX studded or flanged
SIDES	Studded sides or no outlets
RAMS	Sealing blind, 1-1/8", 1-1/4", 1-1/2"

- A true 10,000 psi working pressure BOP.
- Rams factory tested to 10,000 psi, shell tested to 15,000 psi.
- Test charts available.



High Temp BOP

Any MOST 3000 psi or higher rated BOP can be changed into a 3000 psi High Temp BOP with a simple ram change.

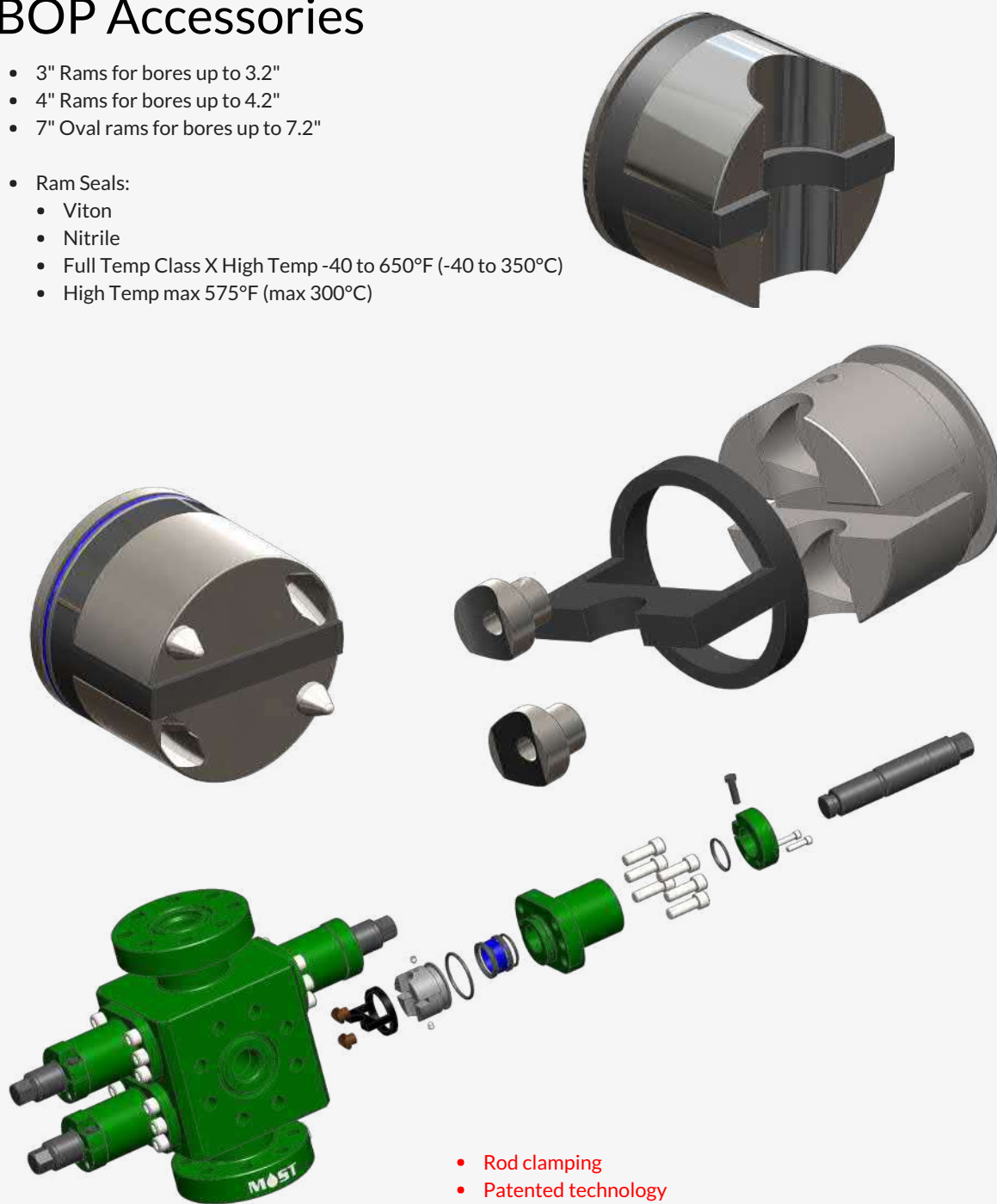
The MOST High Temp BOP is fully rated, with test charts for ambient and full temperature pressure tests.



All MOST™ well head equipment can be customized to suit specific well requirements.

BOP Accessories

- 3" Rams for bores up to 3.2"
- 4" Rams for bores up to 4.2"
- 7" Oval rams for bores up to 7.2"
- Ram Seals:
 - Viton
 - Nitrile
 - Full Temp Class X High Temp -40 to 650°F (-40 to 350°C)
 - High Temp max 575°F (max 300°C)

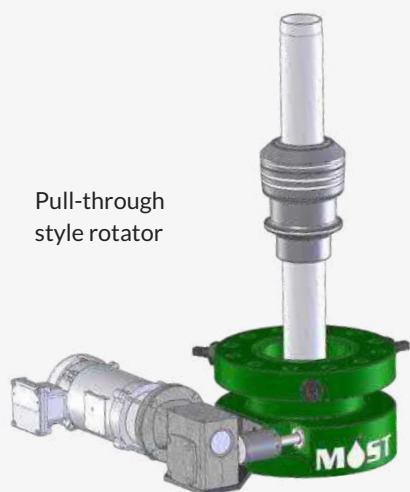


- Rod clamping
- Patented technology
- Holds up to 40,000 lb vertical load without rod damage

All MOST™ well head equipment can be customized to suit specific well requirements.

The **SURFACE TUBING ROTATOR** reduces production costs, extending the life of the production tubing by allowing the entire inside circumference to wear evenly. The rotator becomes part of the well head assembly as it sits between the well head and blow out preventer. The rotator is designed to work with both rod pumping systems and progressing cavity pumping systems.

- Designed and tested to API 6A specifications.
- Patented technology.
- The worm gear and rotor are completely sealed to prevent clogging and extend service life.
- Nitrided parts to prevent galling.
- Shear collar prevents over-torquing on the tubing.
- Easy to install.
- Rotation rate: about 1.5 revolutions per day with electric motor.



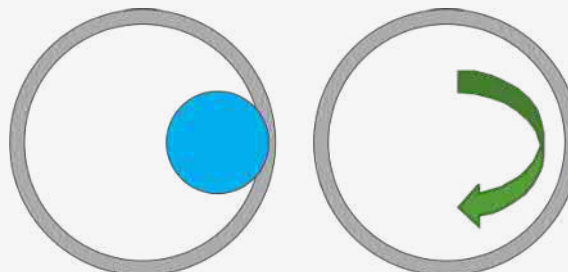
Pull-through style rotator

Surface Tubing Rotator	
BORE (in)	ACTUAL THROUGH BORE (in)
7-1/16"	6-1/2"
9"	8-1/4"
11"	10-1/4"

Size Options	7-1/16", 9", 11"
Pressure	2000 psi, 3000 psi, 5000 psi
Hanger Sizes	2-3/8" EUE, 2-7/8" EUE, 3-1/2" EUE, 4-1/2" EUE



Distributes wear around the tubing:



Using a tubing rotator can extend the tubing life by 300+%, leading to significant savings

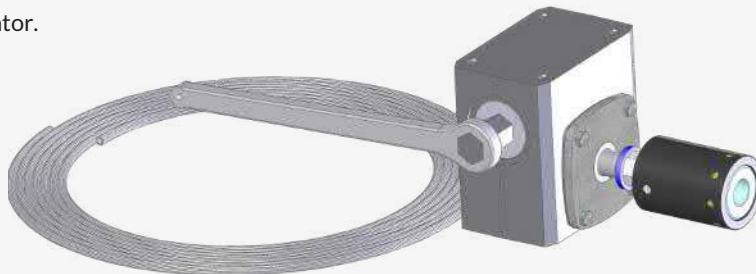
Tubing Swivel

- The tubing swivel allows the tubing to turn while the pump stays anchored.
- Sizes:
 - 2-3/8" EUE
 - 2-7/8" EUE
 - 3-1/2" EUE
 - 4-1/2" EUE



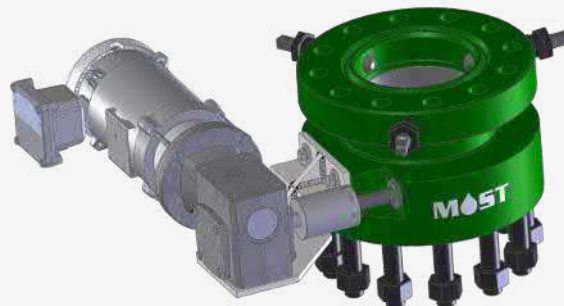
Pumpjack Drive System

- Uses the beam to operate the rotator.



Electric Drive System

- Electric motor and reduction gearboxes to rotate the tubing ~1.5x per day.
- 110VAC 1ph 60hz
- 220V/380VAC 3ph 50hz
- 220V/480VAC 3ph 60hz
- 12VDC



Adapter Flanges

TOP	API 6B flange, 2000 psi, 3000 psi, 5000 psi or internal thread
BOTTOM	API 6B flange, 2000 psi, 3000 psi, 5000 psi OPTIONS: internal thread, seal prep



Spools and Adapter Spools

TOP	API 6B flange, 2000 psi, 3000 psi, 5000 psi or internal thread
BOTTOM	API 6B flange, 2000 psi, 3000 psi, 5000 psi OPTIONS: internal thread, seal prep



TOP	API 6B flange, 2000 psi, 3000 psi, 5000 psi or internal thread
BOTTOM	API 6B flange, 2000 psi, 3000 psi, 5000 psi OPTIONS: internal thread, seal prep



Rod Rotators

- Evenly distribute rod wear
- Reduce paraffin buildup
- 1-1/8" to 1-3/4" rod size
- Worm gear or ratchet table type
- Available "slow gear" model for reduced rotation



Rod Clamps

- Available single, double, or triple
- Indentation style
- Forged alloy steel
- Independent clamping sections on a common hinge
- Sizes 1-1/8", 1-1/4", 1-1/2"



Multi-Fit Casing Bowl

Patented Technology

The **Multi-Fit Casing Bowl** reduces cost and well downtime by making use of a modular design that allows for multiple easy to install Head & Side Adapter options on the same casing bowl.

- Removable top flange can be reused on the next well, or pulled for repair
- Replaceable casing side ports to easily replace washouts
- Mix and Match: Use a 7-1/16" Flange on a 8-5/8" casing for increased cost savings
- Easy to change flanges to eliminate use of adapter spools
- Walk-away plug or end of life cap for after abandonment workover
- Change the pressure rating by installing a different flange
- NACE MR0175 compliant

Available Options	
Casing Bowl	7" Casing, 8-5/8" Casing
Casing Head	Flange: 7" 2K/3K, 9" 2K/3K
Side Adapter	Flange: 2-1/16" 2K/3K/5K
Abandonment	End of Life Cap



Casing Head



Casing Bowl



Flanged Side Outlet



End of Life Cap

The **TorqKing™ Collar** eliminates the need for a no-turn tool or torque rings by using an innovative yet simple design. When torqued properly with the rig tubing tongs, the TorqKing Collar helps reduce rig time costs and extends rod life.

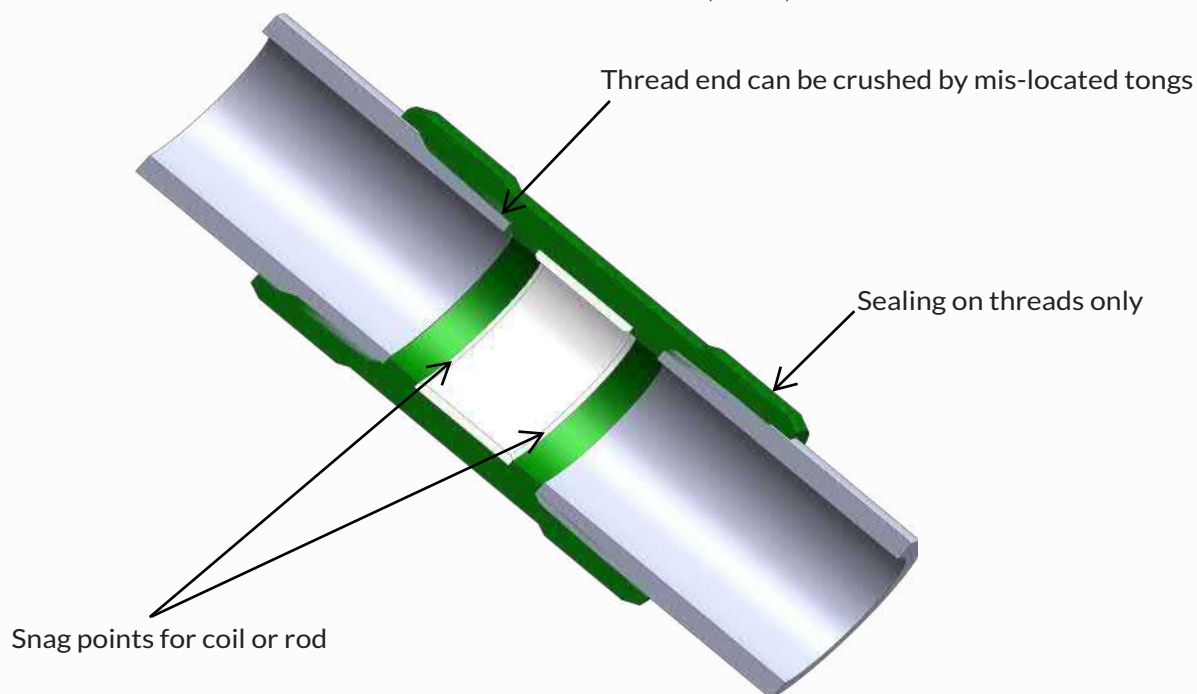
- Designed for tongs
- Stronger and more robust than conventional EUE collar
- Available UHMW plastic insert reduces potential rod wear
- Design eliminates tubing end wear and snag point seen in regular couplings
- Seals on threads and face of tubing
- Works with worn tubing threads
- Suitable for high torque applications



SIZE*	GRADE	COLLAR ID (IN)	API COUPLING TORQUE (FOR REFERENCE ONLY, FT-LBS)	TORQKING™ COLLAR INSTALL TORQUE (FT-LBS)
2-7/8" EUE	J-55	2.42	1650	2150
	L-80		2250	2600
	P-110		3040	3190
3-1/2" EUE	J-55	2.97	2280	3500
	L-80		3030	4060
	P-110		4230	4950
3-1/2" EUE	J-55	2.42**	2280	3500
	L-80		3030	4060
	P-110		4230	4950

* Additional sizes, threads & grades available upon request

** For 2-7/8" OD Rod Components Only





✉ sales@mostoil.com

☎ 1.780.468.1058

www.mostoil.com